



MagStar Technologies designs and manufactures conveyors for factory automation in cleanroom environments. A full line of modular components, both standard and custom, are ideal for medical, micro-electronics, and semiconductor applications. Headquartered in Hopkins, MN, the company serves both national and international markets.

For additional information please visit our web site at:  
[www.magstar.com](http://www.magstar.com)  
Ph: 800-473-8837



## Advanced Conveyor Solution for HTS Microplate Processing

Quickdraw offers conveyor systems for automation within the laboratory environment. These devices offer drug discovery companies the ability to maximize throughput in the screening process.

Whether integrated into process equipment or connecting several processes in-line, the conveyor's low profile design accommodates restricted spaces. The patented slip roller's design allows for locating of plates for dispensing, inspection, and other operations.

Quickdraw conveyors allow for variable speed, bi-directional transport of microplates, in either orientation. The design also offers the flexibility to be reconfigured to changing layouts.



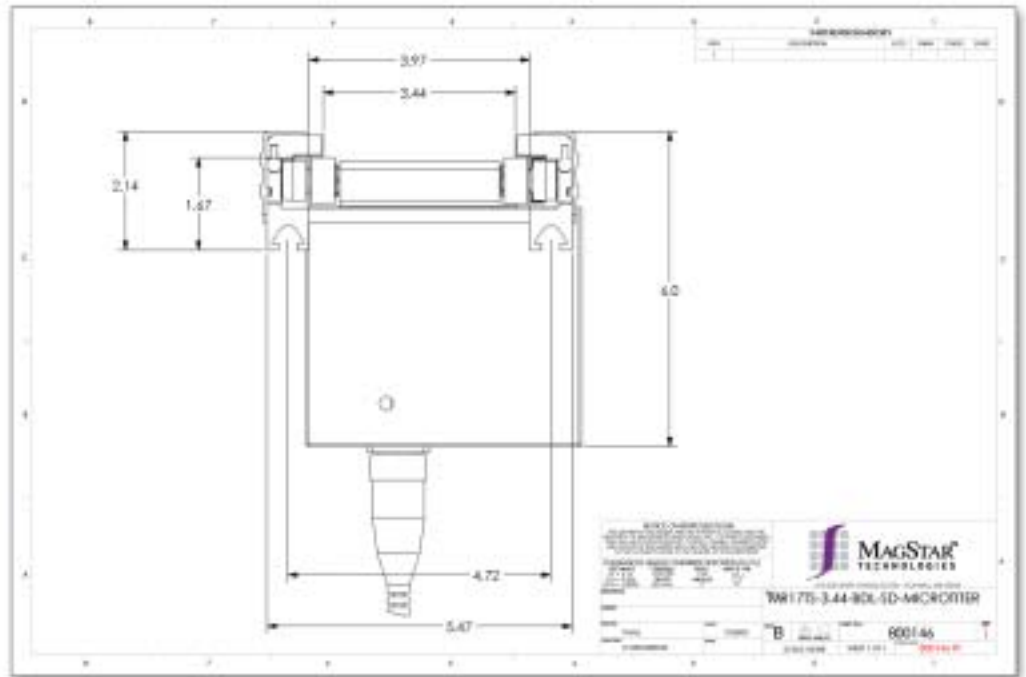
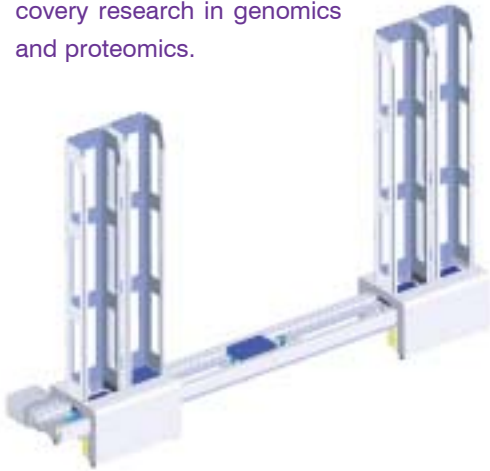
**Quickdraw**  
CONVEYOR SYSTEMS

MAGSTAR™ TECHNOLOGIES

410 Eleventh Avenue South • Hopkins, Minnesota 55343  
952.935.6921 or 1.800.473.8837 • Fax: 952.933.5803  
e-mail: [info@magstar.com](mailto:info@magstar.com) • [www.magstar.com](http://www.magstar.com)

## MICROPLATE CONVEYOR

All components are DMSO (Dimethyl Sulfoxide) compatible and meet clean-room class 1000 requirements. Safe and quiet operation makes this an ideal conveyor to meet the HTS requirements for drug discovery research in genomics and proteomics.



<b>Cleanliness</b>	Class 1000. Class 6 Fed. Std. 209E (ISO Class 6)
<b>Speed</b>	0 to 60 feet per minute
<b>Pallet or Part Size</b>	Capable of transporting in either orientation. 3.4" x 5.0" (85.5mm x 127.8)
<b>Pallet or Part Wt.</b>	minimum: N/A maximum: 1.5 lbs. / inch
<b>Conveyor Lengths</b>	6", 9", 11", 15", 17", 22", 30", 35", 39", 48", 60" *custom available in 1" increments
<b>Power requirements</b>	24 VDC. 110 plug-in-play available.
<b>Integrate with</b>	Dispensing, Inspection, Analyzers, Labeling, Shakers
<b>Features</b>	Bi-directional. Capacity to accumulate plates. Handles thin-walled microplates. DMSO compatible.
<b>Auxiliary Devices</b>	Lift & Locate Docks, Rotators, Loaders / Unloaders, Stackers, Diverters.



**Quickdraw**  
 CONVEYOR SYSTEMS